



*ThreeRivers*

PARK DISTRICT



Baker/Carver Regional Trail  
master plan | public review draft

November 2014

# the **mission** of Three Rivers Park District is to promote environmental stewardship through recreation and education in a natural resources-based park system.

Three Rivers Park District was established in 1957 after legislation was enacted in 1955 allowing for the activation of park districts whose primary duties are “acquisition, development and maintenance of large parks, wildlife sanctuaries, forest and other reservations, and means for public access to historic sites and to lakes, rivers and streams and to other natural phenomena” (Minnesota State Statutes, Chapter 398.07).

There are more than 10 million annual visits to more than 26,500 acres of park reserves, regional parks and special-use areas in Hennepin and five adjoining counties and 120 miles of regional trails. Current outdoor-recreation activities in regional parks and trails include camping, hiking, cross-country and downhill skiing, tubing, bicycling, in-line skating, horseback riding, nature interpretation, golfing, fishing and swimming. Three Rivers Park District also operates a natural resources management program, which administers the restoration and perpetuation of both native wildlife and plants in order to provide park and trail visitors opportunities for high-quality recreational experiences.



## Board of Commissioners

### **Penny Steele, District 1**

*Term Expires 12/31/16*

- *Corcoran, Greenfield, Hanover, Independence, Long Lake, Loretto, Maple Plain, Medicine Lake, Medina, Minnetrista, Minnetonka Beach, Mound, New Hope, Orono (precincts 1, 3 & 4), Plymouth, Rockford, Rogers, Spring Park, St. Bonifacius, Wayzata*

### **Jennifer DeJournett, District 2**

*Term Expires 12/31/14*

- *Brooklyn Park (all precincts except W1-0 & W1-R), Champlin, Dayton, Maple Grove, Osseo*

### **Daniel Freeman, Vice Chair, District 3**

*Term Expires 12/31/16*

- *Brooklyn Center, Brooklyn Park (only precincts W1-0 & W1-R), Crystal, Golden Valley, Hopkins (precinct 2), Robbinsdale, St. Anthony, St. Louis Park*

### **John Gunyou, Chair, District 4**

*Term Expires 12/31/14*

- *Deephaven, Edina, Excelsior, Greenwood, Hopkins (all precincts except 2), Minnetonka, Orono (precinct 2), Richfield (all precincts except 6 & 9), Shorewood, Tonka Bay, Woodland*

### **John Gibbs, District 5**

*Term Expires 12/31/16*

- *Bloomington, Chanhassen, Eden Prairie, Fort Snelling, Richfield (precincts 6 & 9)*

### **Larry Blackstad, Hennepin County Appointee**

*Term Expires 12/31/14*

- *Serves at large*

### **Steven Antolak, Hennepin County Appointee**

*Term Expires 12/31/16*

- *Serves at large*





## Acknowledgements

Three Rivers Park District (Park District) gratefully acknowledges the staff, community members and other participants who contributed to the Baker/Carver Regional Trail Master Plan.

The Park District extends a special thank you to the individuals listed below who provided guidance, time, questions, and critical insight throughout the process.

### City Representatives

#### City of Minnetrista

David Abel, Community Development Director

#### City of Independence

Toni Hirsch, City Administrator

#### City of Maple Plain

Tessia Melvin, City Administrator (present)

Jason Ziemer, City Administrator (former)

### Park District Leadership Staff

Boe R. Carlson, Superintendent  
and Secretary to the Board

Thomas K. McDowell, Associate Superintendent  
Division of Recreation, Education & Natural Resources

Jonathan Vlaming, Associate Superintendent  
Division of Planning, Design & Technology

### Park District Project Staff

Ann Rexine, Planner

Eric Nelson, Senior Manager of Engineering

Heather Kuikka, Planning Administrative Specialist

Kelly Grissman, Director of Planning

Stephen Shurson, Landscape Architect

### Agency Representatives

#### MN Department of Natural Resources

Laura Preus, Natural Resources Program Manager

#### Hennepin County Department of Transportation

Bob Byers, P.E.

*This page left intentionally blank*



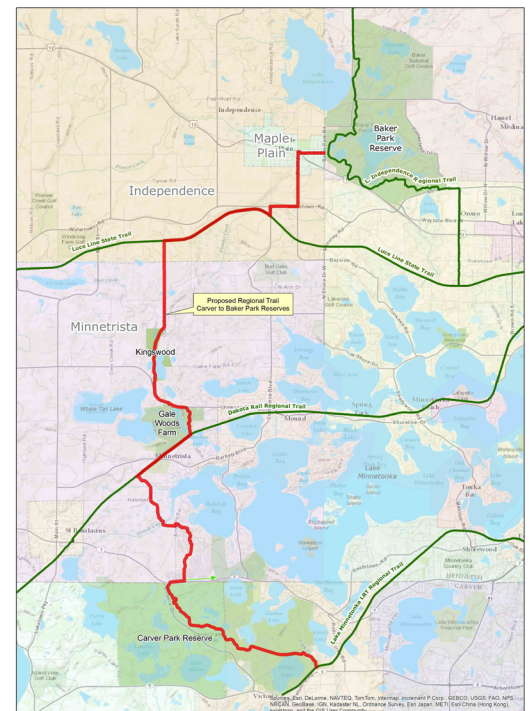
## Executive Summary

The Baker/Carver Regional Trail will fill a gap in the regional park and trail system with a safe, accessible and enjoyable recreation and alternative transportation option. Currently, southwestern suburban Hennepin County residents do not have access to a convenient and attractive off-road regional trail that supports a north/south connection. The Baker/Carver Regional Trail will expand recreational access to park and trail facilities, residential neighborhoods, commercial nodes and downtown Maple Plain - which in turn supports bicycle and pedestrian mobility and economic development.

When completed, the trail will measure approximately seventeen miles from the Lake Independence Regional Trail in Baker Park Reserve to the Lake Minnetonka LRT Regional Trail in Carver Park Reserve. The regional trail will connect the Hennepin County communities of Medina, Maple Plain, Independence and Minnetrista and the Carver County communities of Laketown Township and Victoria. Users will have the ability to effectively traverse the entire north/south length of western Hennepin County.

The proposed regional trail will directly connect recreational destinations such as Baker and Carver Park Reserves, Gale Woods Farm, and Kingswood Park in addition to Lake Minnetonka LRT, Dakota Rail and Lake Independence Regional Trails - and the Luce Line State Trail, and will indirectly connect to Lake Minnetonka Regional Park. Some segments of the proposed trail already exist, or are planned for construction funding in the future.

Originally a city of Minnetrista initiative, Three Rivers Park District assumed responsibility of the Baker/Carver Regional Trail planning in 2012. The proposed regional trail search corridor was expanded beyond the initial Minnetrista planning to include connection to Baker Park Reserve through the communities of Independence, Maple Plain and Medina.



**Baker/Carver Regional Trail Alignment**

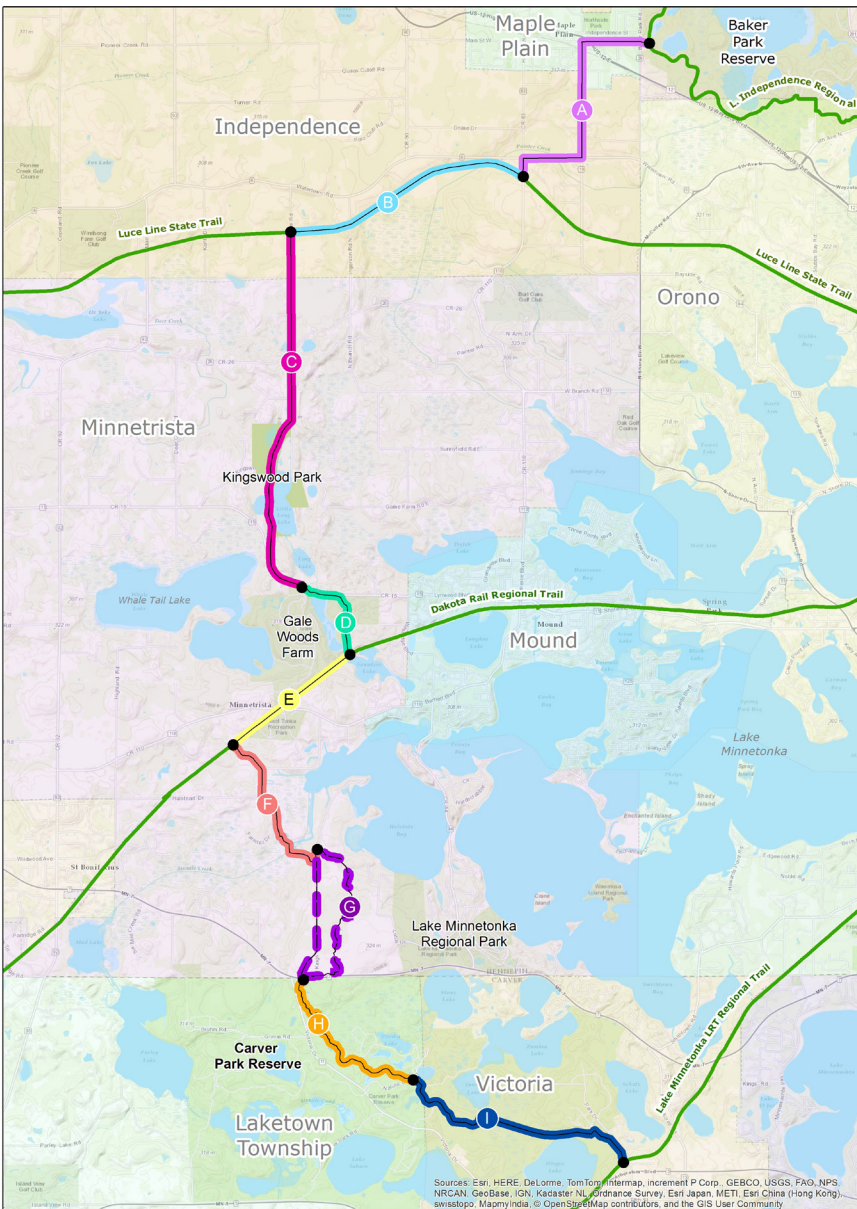
Source: Three Rivers Park District



The *Baker/Carver Regional Trail Master Plan* is intended to reflect and expand upon the work done by Minnetrista and further incorporate the larger regional context and destinations.

Active use of the Baker/Carver Regional Trail is expected to provide walking/hiking, bicycling, running/jogging, in-line skating, and dog walking opportunities during the non-winter months. The Park District's seasonal-use data of existing regional trails indicates that significant use of the trail will occur in the spring, summer and fall seasons. Winter use of the Baker/Carver Regional Trail is dependent on weather conditions and independent winter use agreements with local communities to maintain and operate the trail during the winter season (defined as November 15 to March 31). When fully constructed, the Baker/Carver Regional Trail is projected to generate 183,000 annual visits.

In summary, the Baker/Carver Regional Trail is estimated to require at minimum; 1) acquisition costs: \$435,700, 2) construction costs: \$10,300,000, 3) one-time costs (maintenance equipment or similar): \$100,000 and 4) annual costs: \$5,000 for natural resource management and \$60,000 for maintenance.



Segment A   Downtown Maple Plain			
Lake Independence Regional Trail (Baker Park Reserve) to Luce Line State Trail	Medina, Maple Plain and Independence	Future Construction	2.25 miles

Segment B   Luce Line State Trail			
Luce Line State Trail	Independence	Constructed (unpaved)	2.16 miles

Segment C   Kingswood			
Luce Line State Trail to CR 15 (through Kingswood Park)	Independence and Minnetrista	Future Construction	3.26 miles

Segment D   Gale Woods Farm			
CR 15 to Dakota Rail Regional Trail (through Gale Woods Farm)	Minnetrista	Future Construction	0.9 miles

Segment E   Dakota Rail Regional Trail			
Dakota Rail Regional Trail	Minnetrista	Constructed	1.28 miles

Segment F   Six Mile Marsh			
Dakota Rail Regional Trail to Kings Point Road	Minnetrista	Future Construction	1.53 miles

Segment G   Woodland Cove			
Kings Point Road to TH 7 (through Woodland Cove)	Minnetrista	Anticipated Construction 2014-2019	1.70 miles

Segment H   Carver Park Reserve I			
TH 7 to Lowry Nature Center (through Carver Park Reserve)	Laketown Township	Anticipated Construction 2019	1.71 miles

Segment I   Carver Park Reserve II			
Lowry Nature Center (through Carver Park Reserve) to Lake Minnetonka LRT Regional Trail	Laketown Township and Victoria	Constructed	2.25 miles

Total: 17.04 miles

**Baker/Carver Regional Trail Segmentation**

Source: Three Rivers Park District



# Table of Contents

		<b>Page</b>
<b>Section I</b>	<b>Planning Framework.....</b>	<b>1-3</b>
	Overview.....	1
	Metropolitan Regional Parks System.....	2-3
	Three Rivers Park District.....	3
	Regional Trail Planning Guidelines.....	3
<b>Section II</b>	<b>Planning &amp; Public Process.....</b>	<b>5-9</b>
	Background.....	5-7
	Dissemination of Information.....	7-8
	Feedback Received.....	8-9
	Future Public Engagement.....	9
	Related Projects & Plans.....	9
<b>Section III</b>	<b>Demand Forecast.....</b>	<b>11-15</b>
	Overview.....	11
	Recreation Use Trends.....	11-13
	Existing Three Rivers Park District User Data.....	13
	Demographics.....	13-14
	Projected Trail Use.....	14
<b>Section IV</b>	<b>Trail Route Description &amp; Development Concept.....</b>	<b>17-30</b>
	Overview.....	17
	Trail Segmentation.....	18-30
<b>Section V</b>	<b>Design Guidance.....</b>	<b>31-37</b>
	Overview.....	31
	Permitted Regional Trail Use.....	32
	Access to All.....	32
	Design Guidelines.....	33-34
	Additional Trail Elements.....	34-37

<b>Section VI</b>	<b>Operations &amp; Maintenance Plan.....</b>	<b>39-43</b>
	Public Safety.....	39-40
	Natural & Cultural Resources.....	40
	Maintenance.....	40-42
	General Operations & Considerations.....	42-43
<b>Section VII</b>	<b>Implementation, Estimated Costs, &amp; Funding.....</b>	<b>45-47</b>
	Acquisition Plan and Costs.....	45-46
	Development Plan and Costs.....	46
	Acquisition and Development Funding.....	46
	Potential Funding Sources.....	46-47
<b>Appendix A</b>	Resolution of Support.....	49
<b>Appendix B</b>	Visitation Estimate Methodology.....	55
<b>Appendix C</b>	Regional Trail Segmentation Maps.....	59
<b>Appendix D</b>	Minnesota Land Cover Classification System (MLCCS) Map.....	71
<b>Appendix E</b>	Property Acquisition Map.....	75
<b>Appendix F</b>	Cost Estimate.....	79