



ThreeRivers
PARK DISTRICT

Joint Workshop | Independence & Maple Plain

Proposed Regional Trail

February 25, 2014 | 6:30 – 7:30 PM

Workshop Agenda

- Introductions (5 min)
- Presentation (15 min)
- Group Discussion (35 min)
- Next Steps (5 min)

Park District Project Website
<http://tinyurl.com/TRPDproposed-trail>

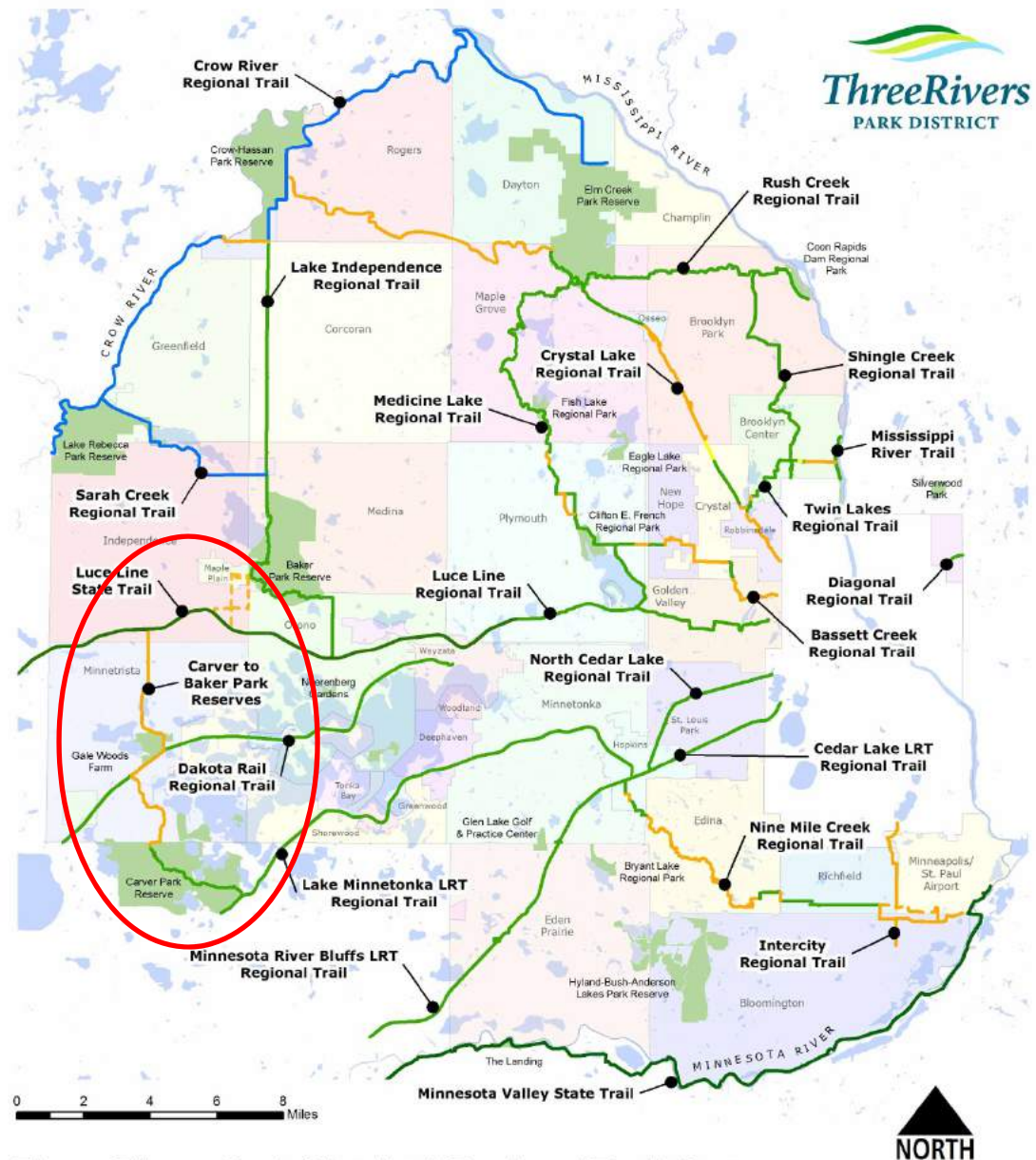
Contact Information

Ann Rexine, Planner
3000 Xenium Lane North
Plymouth, MN 55441
E: arexine@threeriversparkdistrict.org
P: 763.694.1103



Proposed Regional Trail

- Links!
 - Lake Minnetonka LRT RT
 - Carver Park Reserve
 - Lake Minnetonka RP
 - Dakota Rail Regional Trail
 - Gale Woods Farm
 - Kingswood Park
 - Luce Line State Trail
 - Baker Park Reserve
 - And beyond!
- Loops!
- N/S trail in area of future growth
- Does not duplicate other regional trails



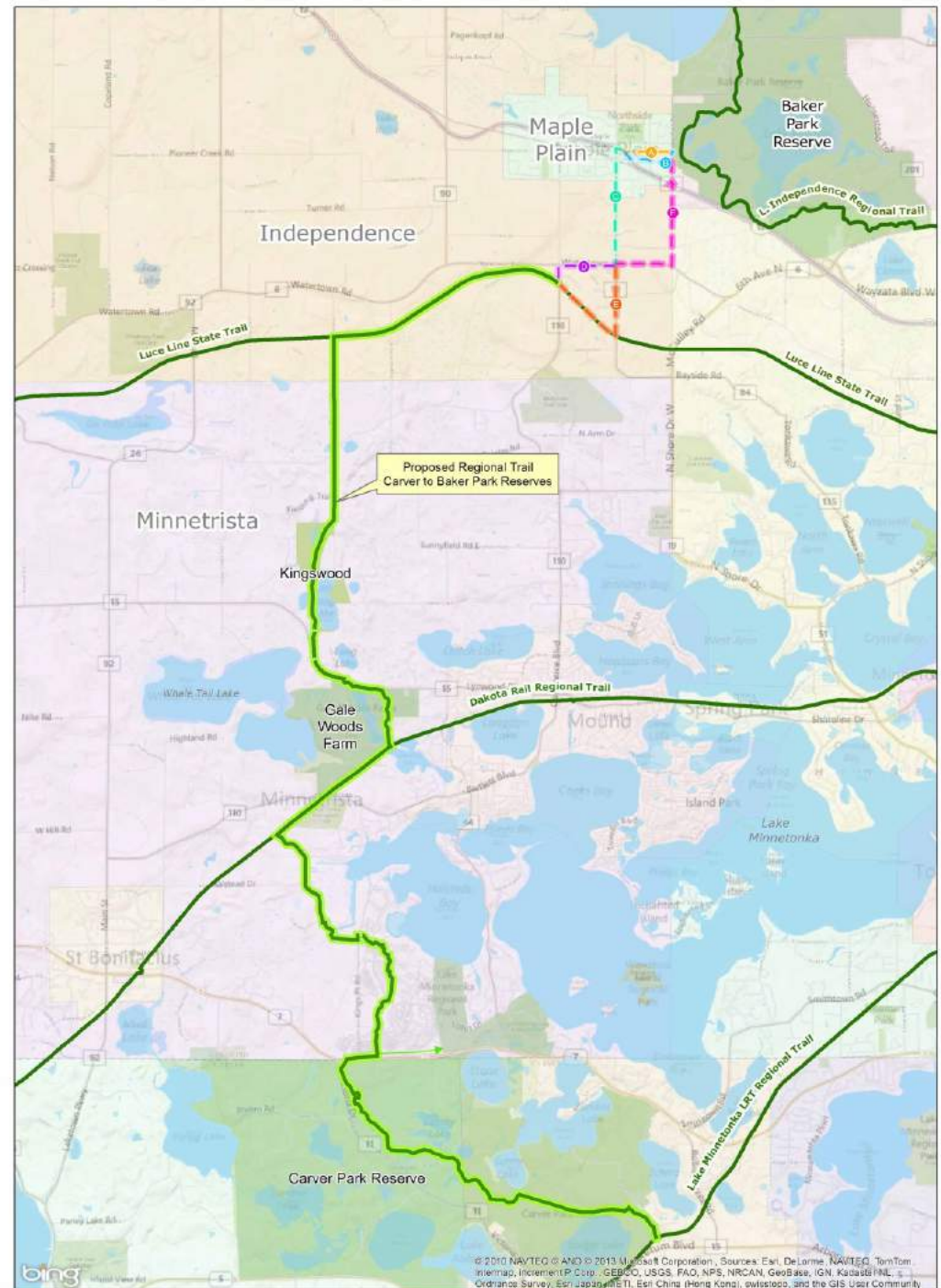
Three Rivers Park District | Regional Trail System

- Open
- Under Construction
- Current Planning
- Alternative Route
- Future Planning
- Lakes

Map prepared by Three Rivers Park District Planning and Development - September 27, 2013
 This GIS Data is provided "as is" without warranty of any representation of accuracy, timeliness, or completeness. The user acknowledges and accepts the limitations of the Data, including the fact that the Data is dynamic and is in a constant state of maintenance, correction, and update.

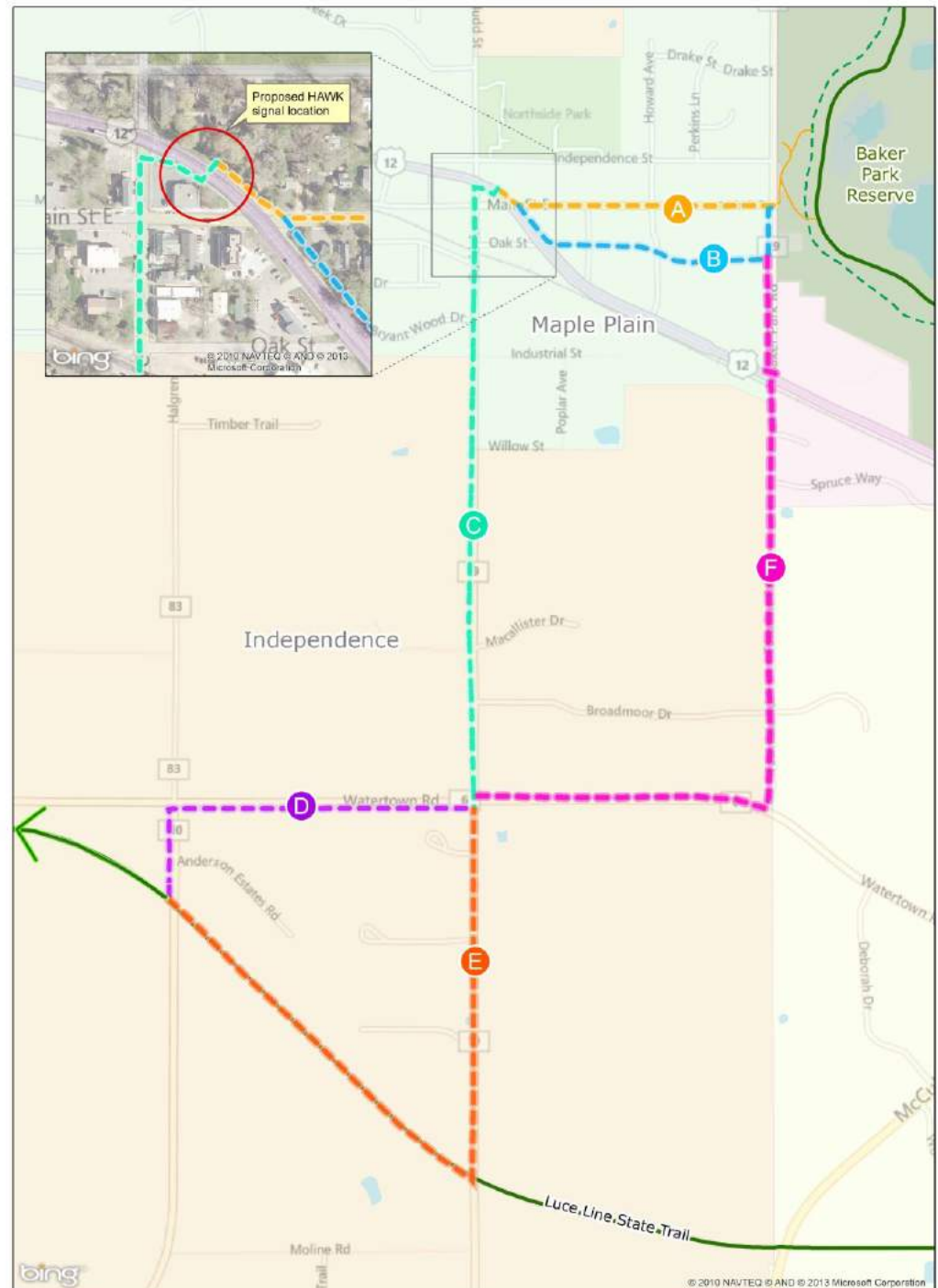
General Timeline

- **2009/2010** - Regional trail idea conceived as City of Minnetrista initiative
- **2011-2012** – Minnetrista leads planning for alignment through their city
- **July 2012** – Minnetrista finalizes alignment and Park District assumes planning. Park District requests amendment to the Met Council Regional Policy Plan to include proposed regional trail search corridor
- **July 2013** – Joint Independence and Maple Plain meeting to discuss extension of proposed trail from Luce Line State Trail to Baker Park Reserve
- **Aug – Sept 2013** – Park District attends City Council meetings, Maple Plain Days and Independence Heritage Fest to garner input
- **October 2013** – Open House
- **Oct – Dec 2013** – Public input sought
- **January 2013** – Joint Independence and Maple Plain meeting to discuss public input and preferred alignment



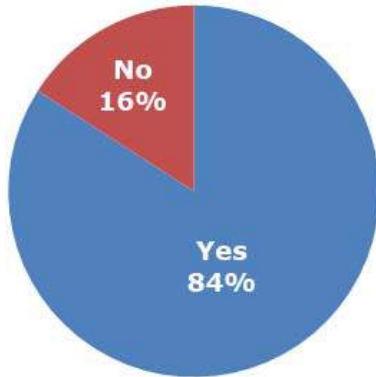
Alternative Alignments

- **A** **Maple Plain**
Main Street/County Road 19
- **B** **Maple Plain**
Redevelopment area
- **C** **Maple Plain/Independence**
County Road 19
- **D** **Independence**
County Road 6/83
- **E** **Independence**
County Road 19
- **F** **Maple Plain/Independence**
Townline Road/County Road 6

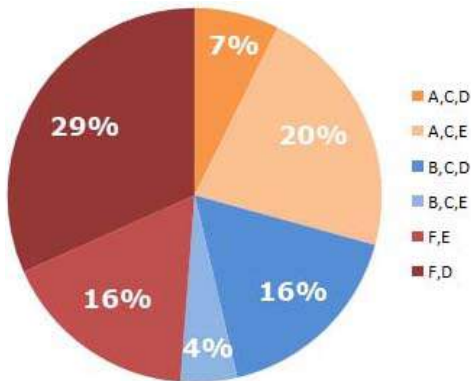


Information Gathering

1. Are you supportive of a proposed trail from Carver to Baker Park Reserves?

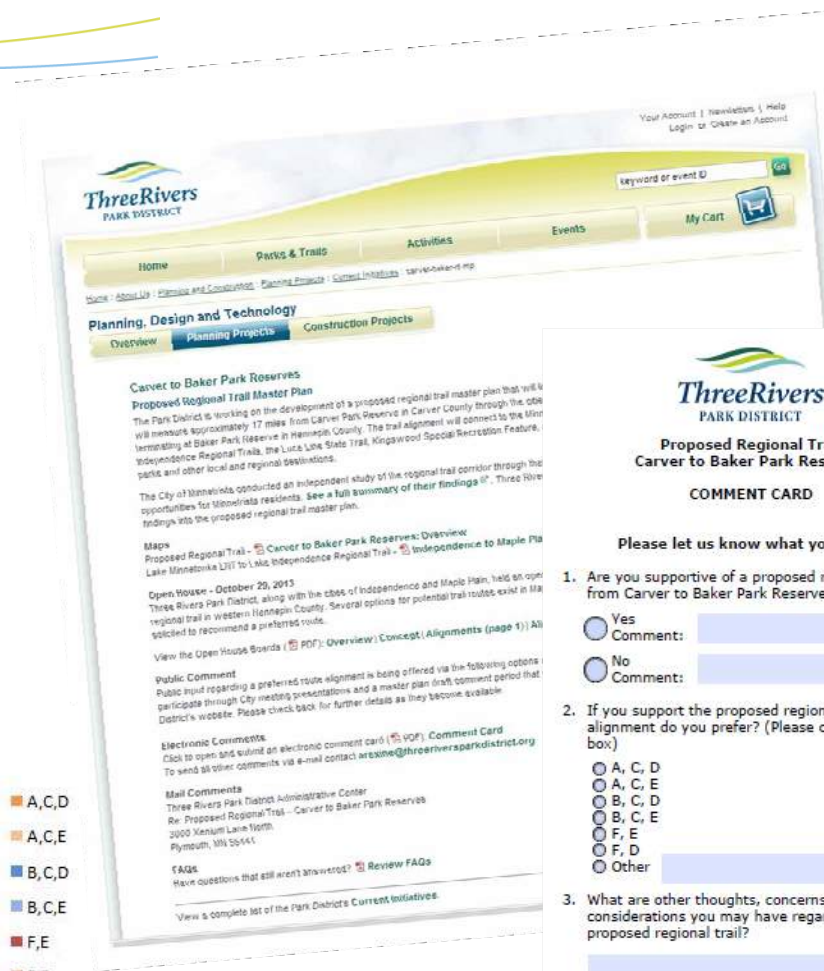


2. If you support the trail, which alignment do you prefer?



3. Thoughts, concerns, or special considerations...(open ended question)

- General positive feedback - safety, design, minimizing impacts, connecting destinations etc.



**Three Rivers
PARK DISTRICT**

**Proposed Regional Trail
Carver to Baker Park Reserves**

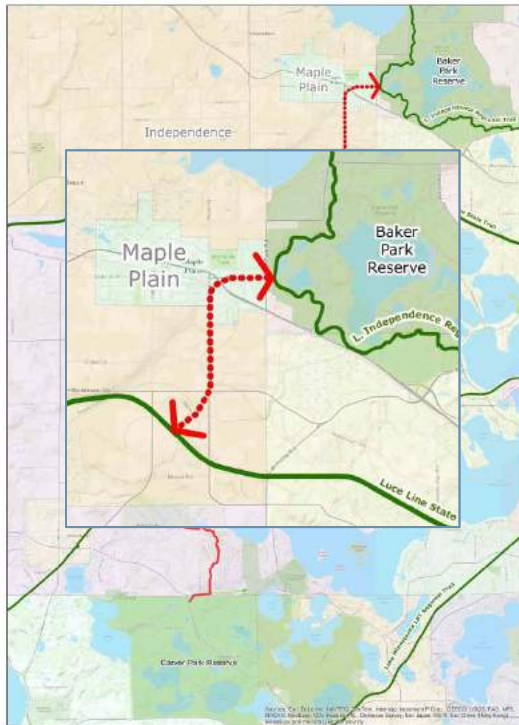
COMMENT CARD

Please let us know what you think.

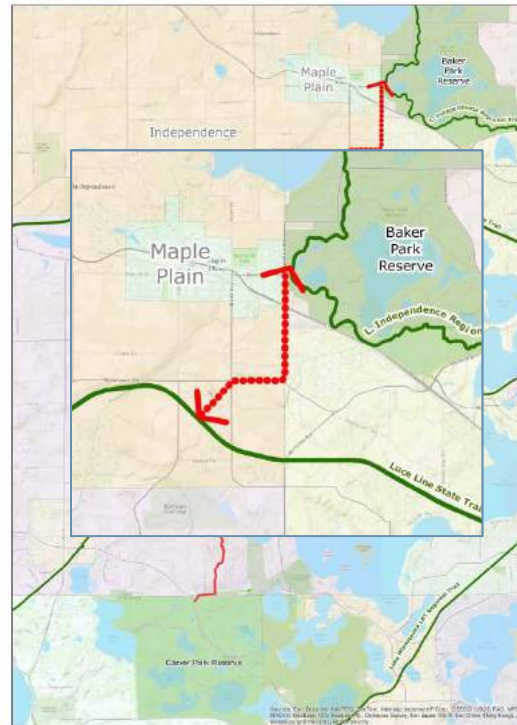
- Are you supportive of a proposed regional trail from Carver to Baker Park Reserves?
 - Yes
Comment:
 - No
Comment:
- If you support the proposed regional trail, which alignment do you prefer? (Please check only one box)
 - A, C, D
 - A, C, E
 - B, C, D
 - B, C, E
 - F, E
 - F, D
 - Other:
- What are other thoughts, concerns, or special considerations you may have regarding the proposed regional trail?

Please send this form to araxine@threeriversparkdistrict.org

Various Potential Outcomes to Discuss



Connect to Maple Plain's downtown
(Option C)

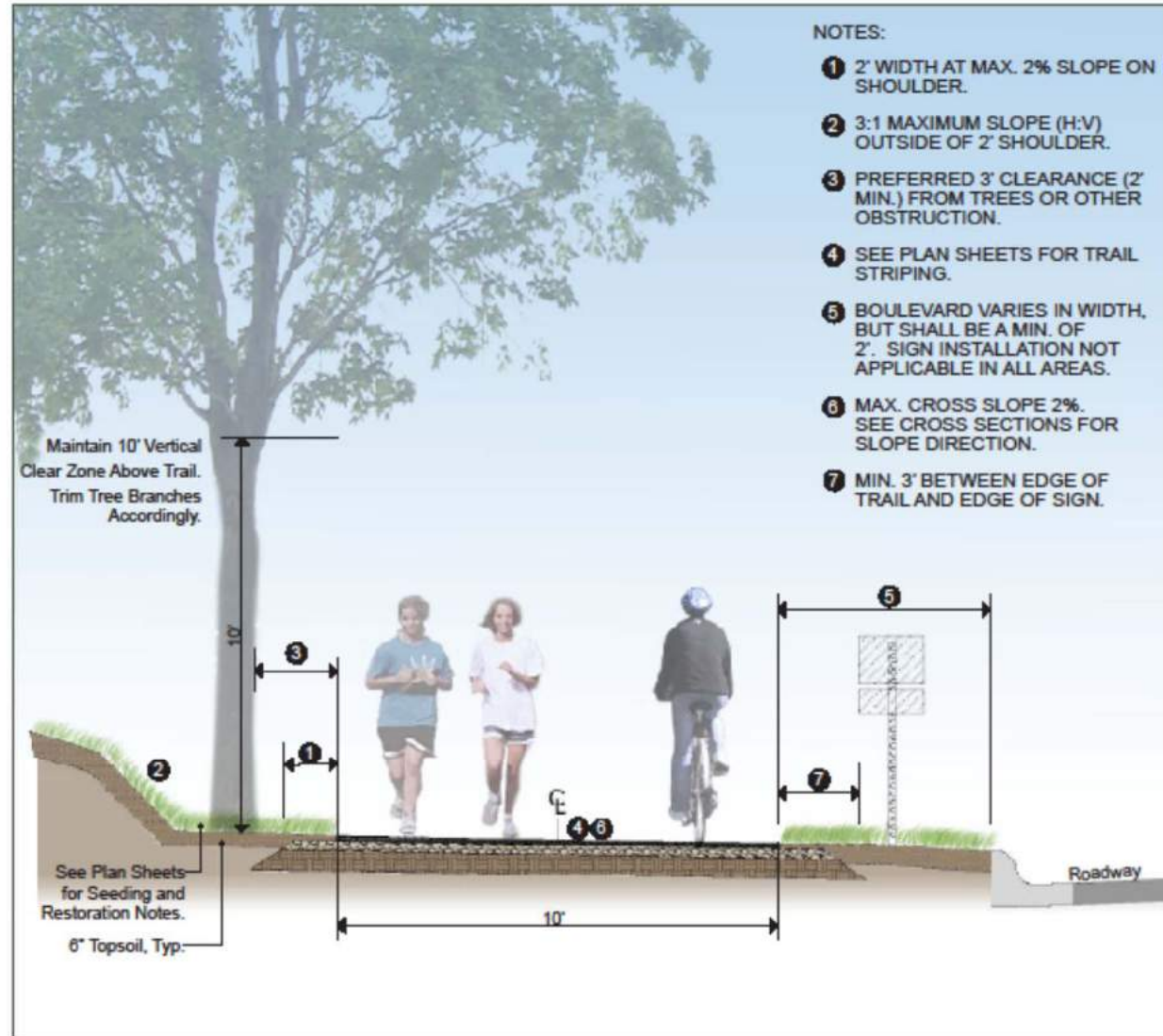


Utilize Townline Road
(Option F)

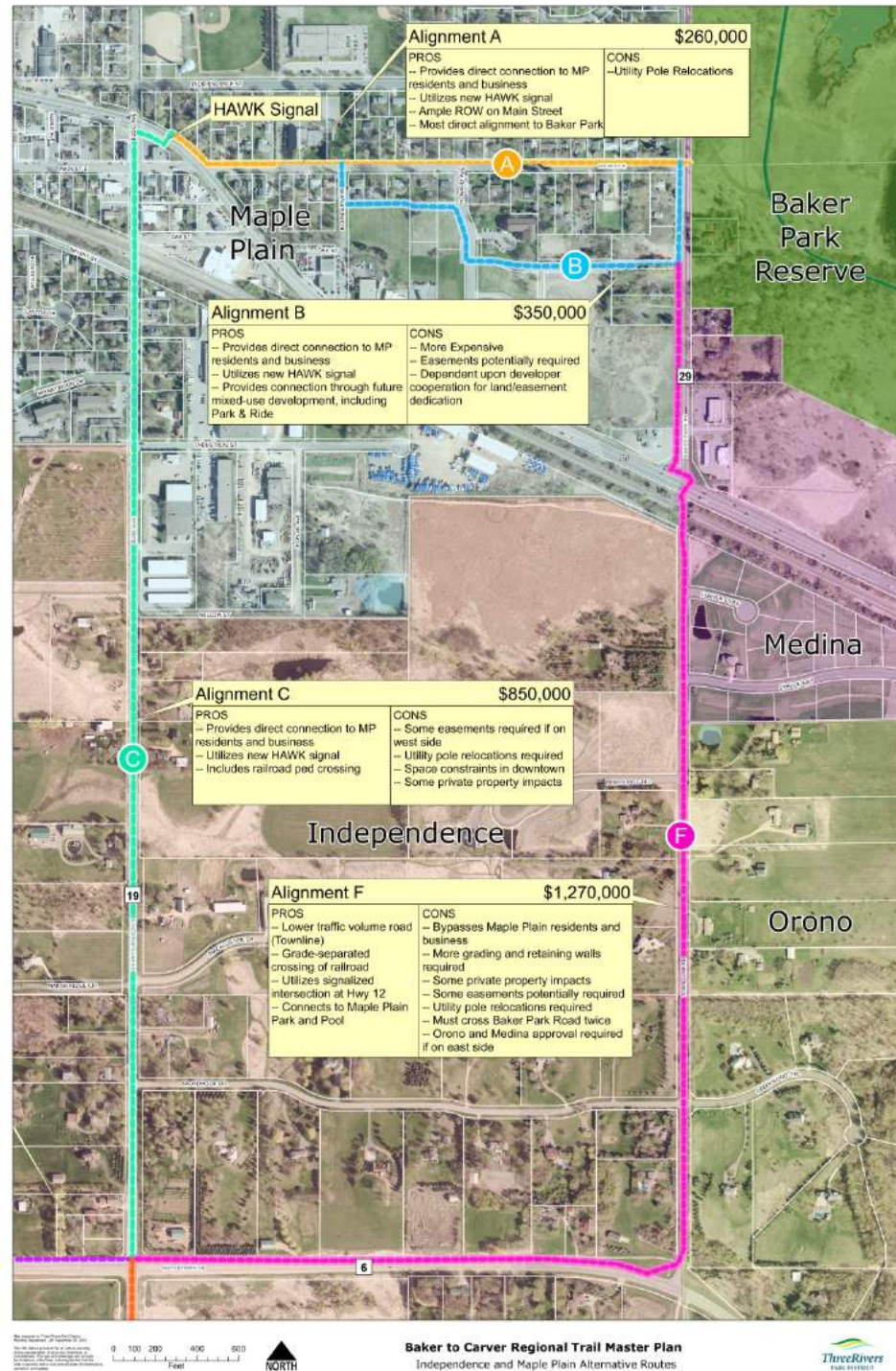


Terminate trail planning at Luce Line State Trail

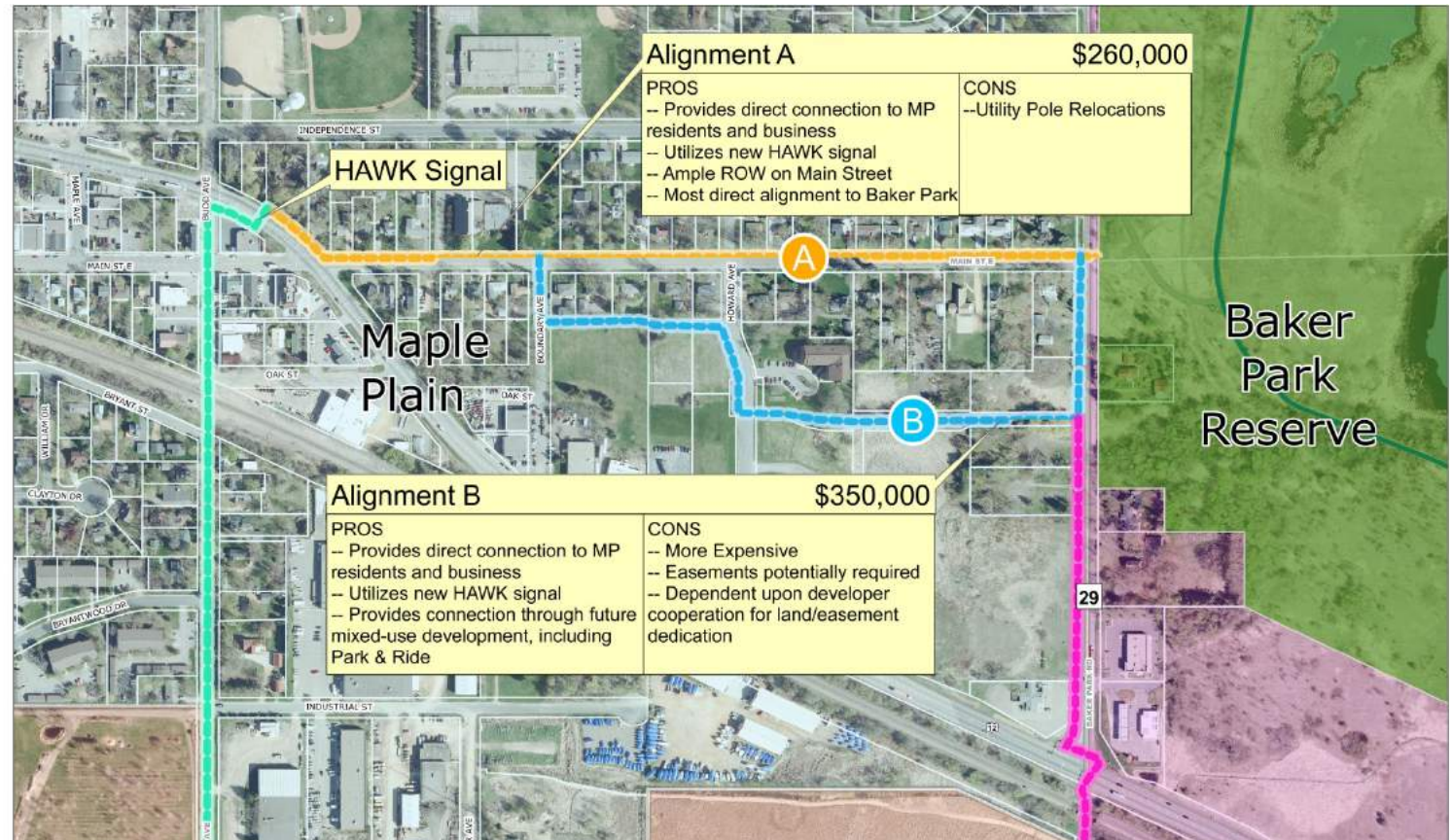
Typical Trail Section



Maple Plain/ Independence Alignments C and F



Maple Plain Alignments A and B





Group Discussion

On behalf of your representative community – what are your thoughts?

Meeting Objective: *To discuss the proposed regional trail through Independence and Maple Plain and gather group consensus whether the trail will:*

- 1) *Connect to Maple Plain's downtown (Option C)*
- 2) *Utilize Townline Road (Option F)*
- 3) *Terminate at the Luce Line State Trail (No Build Option)*



Next Steps

- What approval steps are requested from each City?