

Prairie Seed Collection

2023 INFO PACKET

Help restore our local prairies!

By volunteering to collect native wildflower seed, you can help increase the amount and diversity of seed planted in Three Rivers prairies each year! Your help is extremely important in the effort to manage the nearly 2,000 acres of restored prairie within Three Rivers Park District.

2023 Seed Collection Schedule

All collections start at 10:30 a.m. and end at 1:30 p.m.

Saturday Collections

- August 19 Crow-Hassan Park Reserve
- August 26 Elm Creek (Eastman Nature Center)
- September 9 Crow-Hassan Park Reserve
- September 23 Hyland (Richardson Nature Center)
- October 14 Crow-Hassan Park Reserve

Tuesday Collections

- August 22 Crow-Hassan Park Reserve
- September 5 Crow-Hassan Park Reserve
- September 12 Murphy-Hanrehan Park Reserve
- September 19 Crow-Hassan Park Reserve
- October 3 Crow-Hassan Park Reserve
- October 10 Crow-Hassan Park Reserve

Thursday Collections

- August 31 Crow-Hassan Park Reserve
- September 14 Hyland (Richardson Nature Center)

Registration is Required

Online (preferred):

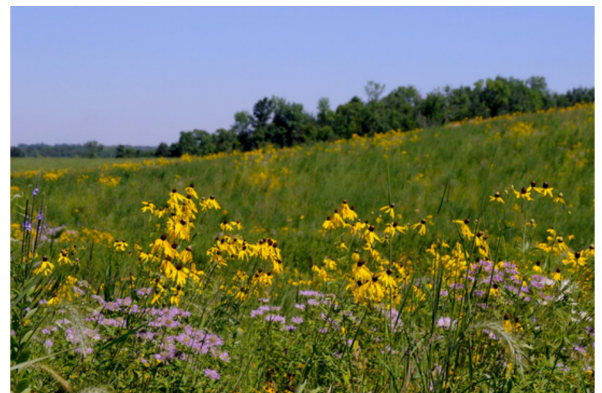
ThreeRiversParks.link/PrairieSeedCollection

Phone: 763-559-6706

Email: Volunteer@ThreeRiversParks.org

Call the **Seed Collection Hotline** to cancel your registration or check weather details:

763-694-7849



Seed Collection Details



What to Expect

- Seed collectors work in sunny open areas, walk through tall grass on uneven terrain and collect seed by hand.
- Collection sites are located in remote areas of our parks. Once parked, the group will be guided out to the collection site. Be sure to arrive on time or early to the designated meeting location!
- Water and restroom facilities may not be located nearby.
- Training is provided at the start of each session.

What to Bring

- Sun protection
- Bug protection
- Garden gloves
- Small garden clippers
- 5 paper grocery bags with handles
- Water and a snack

What to Wear

- Closed toed shoes
- Long pants
- Long sleeves
- Hat
- Sun glasses

We recommend these items to protect from the sun, insects, and scratchy plants!

Groups

We prefer that groups of 10 or more schedule separately from our public programs. Contact Angela to schedule a separate seed collection event just for you!

Angela Grill, Wildlife Biologist
Angela.Grill@ThreeRiversParks.org
763-694-7851

Youth

- The minimum age for participation is 12
- Youth aged 12–16 must be accompanied by an adult (1 adult per 8 youth)

Become an ongoing volunteer!

Interested in volunteering on an ongoing basis? As an ongoing volunteer you would be able to participate in additional volunteer activities, earn volunteer benefits, and more!

Contact the Volunteer Office for more information: Volunteer@ThreeRiversParks.org or 763-559-6706

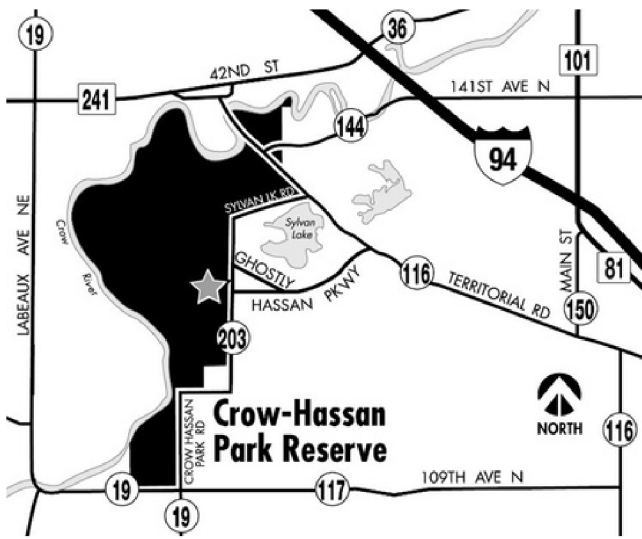
Directions

Call the Seed Collection Hotline to: 763-694-7849

- Cancel if you cannot attend (this is extremely important!)
- Check the outgoing message for last minute changes or cancellations due to poor weather
- Ask questions specific to Prairie Seed Collection events. Be sure to leave your name and phone number.

Getting to the Seed Collection Sites

Be sure to arrive on time or a little early, so you don't miss the group before the walk out to the collection site! This will also ensure that you receive instructions on collecting. See details below for directions to each of the prairie seed collection sites.

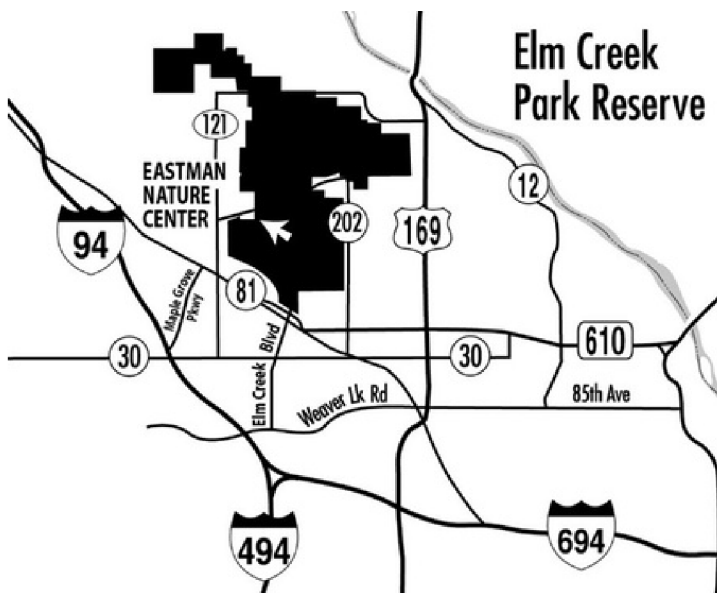


Crow-Hassan Park Reserve

Located west of Rogers. 12595 Park Drive, Hanover, MN 55341.

From Interstate 94, take the Rogers exit and go south into Rogers. Turn right onto Main Street and continue south to the T-intersection. Turn right on County Road 116 and go to County Road 203 (Sylvan Lake Road). Turn left and follow 203 to the park entrance on the right. Seed collectors meet in the trailhead parking lot (for horse, cross-country ski, and hiking trails).

Meet in the parking lot of the main trailhead.



Eastman Nature Center

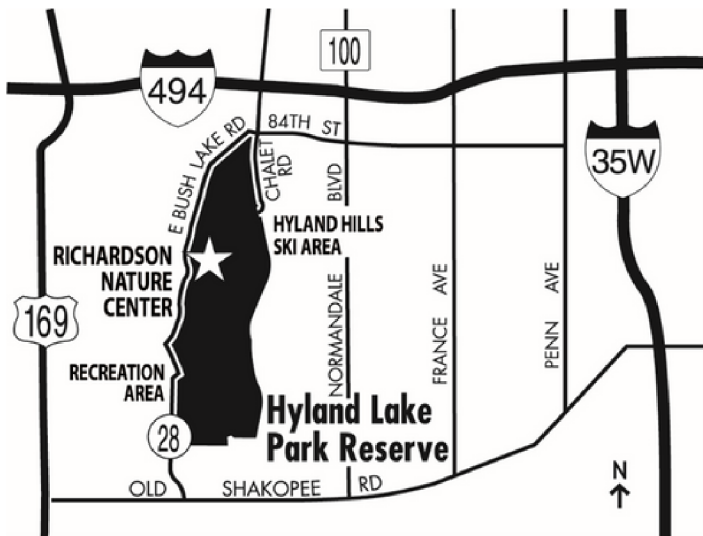
Part of Elm Creek Park Reserve: 13351 Elm Creek Road, Dayton, MN 55369.

Nature Center main phone: 763-559-7700

From Highway 169 or 610, go west on County Road 81. Pass the main park entrance. Turn right (north) onto County Road 121 (Fernbrook Lane). Turn right (east) on Elm Creek Road. The nature center entrance is on your right. Meet in the parking lot of Eastman Nature Center.

From Interstate 94, take exit 213 for Maple Grove Parkway (towards County Road 30). Turn right (north) onto Maple Grove Parkway. Turn right (east) onto County Road 81. Turn left (north) onto County Road 121 (Fernbrook Lane). Turn right (east) on Elm Creek Road. The nature center entrance is on your right. Meet in the parking lot of Eastman Nature Center.

Directions (continued)

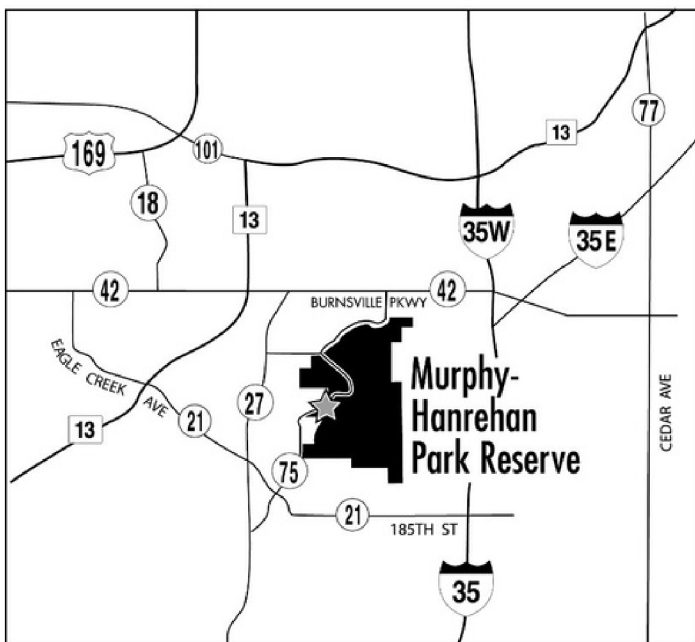


Richardson Nature Center

Part of Hyland Lake Park Reserve: 8737 East Bush Lake Road, Bloomington, MN 55438
Nature Center main phone: 763-694-7676

From Highway 100 headed south, continue onto Normandale Blvd, turn right on 84th Street (will turn into E Bush Lake Rd) and on the left side you will see a sign for Richardson Nature Center. Meet in the parking lot for the nature center.

From Interstate 494, take exit for E Bush Lake Rd, turn right to stay on E Bush Lake Rd. On the left side you will see a sign for Richardson Nature Center. Meet in the parking lot for the nature center.



Murphy-Hanrehan Park Reserve

Located near Savage.

Park along County Road 75 (Murphy Lake Blvd) about ¼ mile south of the boat launch near the red gate.
To get there:

From Interstate 35W, take County Road 42 west 2 miles, turn south on Burnsville Parkway (will turn into Hanrehan Lake Blvd when it crosses the Scott County line), turn south on County Road 75 (Murphy Lake Blvd). **Continue south past the trailhead, bear right at the intersection with Sunset Lake Blvd. Continue past the boat access ¼ mile to a red gate and park in the mowed area.

From Highway 169, take County Road 18 south to County Road 42. Go east on 42 to County Road 27. Turn south on County Road 27, then east on 154th St, and south on County Road 75 (Murphy Lake Blvd). Follow directions above from ** to final meeting location.