

Frequently Asked Questions

Proposed Regional Trail | Carver to Baker Park Reserves

Why is Three Rivers Park District (Park District) planning a regional trail that incorporates the Cities of Minnetrista, Independence, Maple Plain, and ultimately Victoria?

The Park District is proposing a new linking regional trail that will provide connections to Carver and Baker Park Reserves, Gale Woods Farm, Kingswood Special Recreation Feature, and numerous connections to other regional trails such as Lake Minnetonka LRT, Dakota Rail, and Lake Independence Regional Trails – and the Luce Line State Trail. The proposed regional trail will benefit local community members living within three miles of the corridor and trail users who desire looping opportunities that connect to existing regional and state trails.

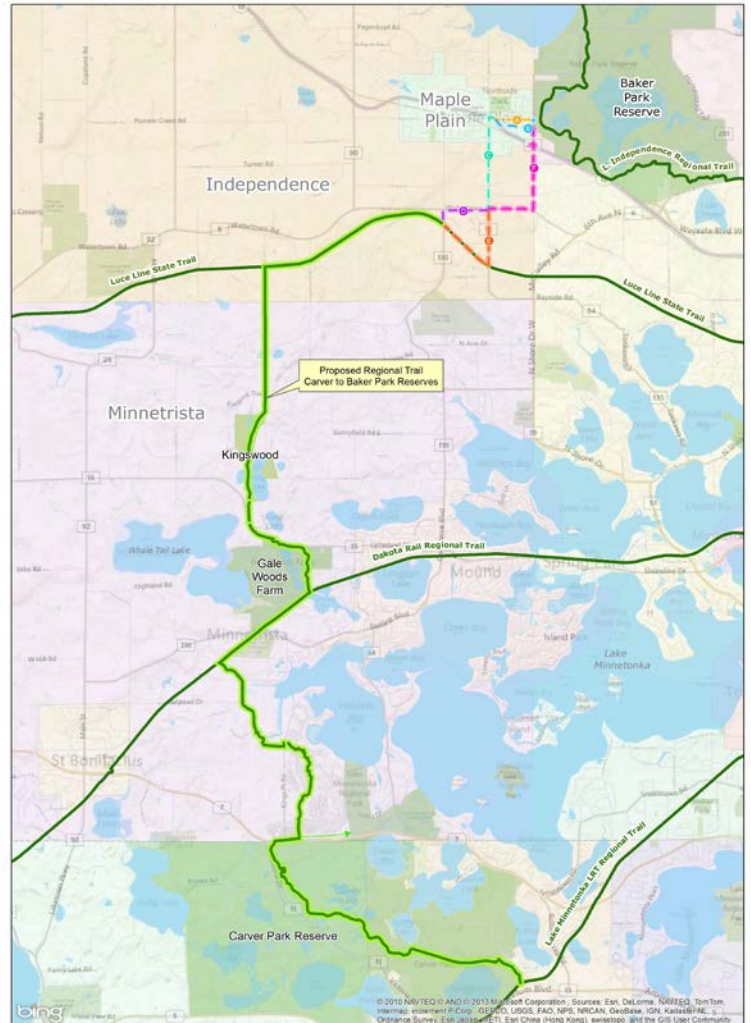
Some segments of the proposed regional trail already exist, or are funded for construction in the near future. These portions include sections through Carver Park Reserve, the crossing of Highway 7, and construction of the regional trail in conjunction with the Woodland Cove residential development in Minnetrista.

How is the selected route chosen and approved?

The regional trail is approximately 17 miles and runs from Lake Minnetonka LRT Regional Trail to Lake Independence Regional Trail, connecting the Cities of Minnetrista, Independence, Maple Plain, and Victoria.

Early planning for the regional trail began in 2010 when the city of Minnetrista began evaluating trail routes through their city. After extensive Minnetrista public input, and coordination with the Park District, their preferred regional trail route was forwarded to the Park District for inclusion into Metropolitan Council's 2030 Regional Policy Plan and subsequent master planning in 2012.

The Park District is responsible for preparing a master plan for each proposed regional trail assigned by the 2030 Regional Policy Plan. As the original scope of the proposed regional trail has expanded to include portions of Independence and Maple Plain to connect further to Baker Park Reserve, additional public input is sought to recommend and support a preferred trail alignment. Upon agreement of a preferred trail alignment, the master plan will be submitted to the affected cities for consideration and approval. After city approval, the master plan will be forwarded to the Metropolitan Council and Park District Board of Commissioners for final consideration, approval, and adoption. Final approval is anticipated Winter 2013/14.



Proposed Regional Trail | Carver to Baker Park Reserves

Overview

Map prepared by Three Rivers Park District Planning Department on September 25, 2013.
This GIS Data is provided "as is" without warranty of any representation or accuracy, completeness, or timeliness. The user acknowledges and accepts the responsibility of the Data, including the fact that the Data is dynamic and is in a constant state of maintenance, correction, and update.



What opportunity does the public have to review and comment on the trail?

The Park District will consider public feedback as well as connectivity to destinations, driveway/road crossings, available right-of-way, existing infrastructure, trail user safety, and utilities in their evaluation of a preferred trail route. A public open house will be held Fall 2013 (more information to follow). The purpose of the open house is to present potential trail routes, share information and solicit public feedback on the potential trail routes. The public is encouraged to share information critical to determining a preferred route. Public comments will be summarized and forwarded to appropriate decision makers.

What trail uses are permitted?

Regional trails are multi-use and provide opportunities during spring, summer and fall for walking, dog-walking, running/jogging, bicycling, and in-line skating. ATVs and snowmobiles are not permitted for portions operated and maintained by the Park District. The Luce Line State Trail is operated and maintained by the Minnesota DNR, which allows snowmobiling. The Park District, at this time, does not propose altering the current arrangement or surface treatment of the Luce Line State Trail.

Will the trail be open 24 hours a day? Will lights be installed?

Park District regional trail hours are 5 AM to 10 PM. There are no plans to light the regional trail.

Will the trail be open year-round?

At this time, winter use is not proposed for the proposed regional trail, but it may be considered in the future. The Park District's present policy provides for the operation and maintenance of regional trail corridors from March 31 – November 15. Local municipalities may apply for a winter trail operation and maintenance permit. Some communities choose to groom trails for cross-country skiing, while others choose to plow the trails for walking and winter bicycle use.

How is the trail funded and when will it be constructed?

The Park District is responsible for building, maintaining, operating and funding the proposed regional trail. The primary funding source for operating costs is Three Rivers Park District property tax revenue, with some revenue received from the State of Minnesota as part of the Operations and Maintenance Fund allocations from the Metropolitan Council. A variety of funding sources and partnership opportunities are utilized to construct regional trails including federal grant funds, Park District General Obligation Bonds, Metropolitan Council Regional Parks Capital Improvement Program Funding, Minnesota DNR Parks and Trails Legacy grant program funds and other governmental agencies through road reconstruction partnership opportunities.

Are trails safe? Who is responsible for public safety?

There have not been any reports of personal or serious crimes along Park District regional trails, and proactive measures are in place to maintain this level of public safety. Safety and security will be provided through regular patrol by Park District public safety officers, presence of maintenance staff, ongoing patrol by the Trail Patrol Volunteer Program, and the amount and frequency of trail users. All law enforcement activities will be coordinated with local law enforcement.

What's next?

A public open house will be advertised later this fall and will occur in Independence/Maple Plain. In the meantime, public comments may be submitted by:

Mail: Three Rivers Park District
Proposed Regional Trail | Carver to Baker
3000 Xenium Lane North
Plymouth, MN 55441

Fax: Three Rivers Park District
Proposed Regional Trail | Carver to Baker
763.557.5248

E-mail: Ann Rexine, Project Manager
arexine@threeriversparkdistrict.org